

Hawai‘i Going Home Plus Operational Protocol

C. ORGANIZATION AND STAFFING

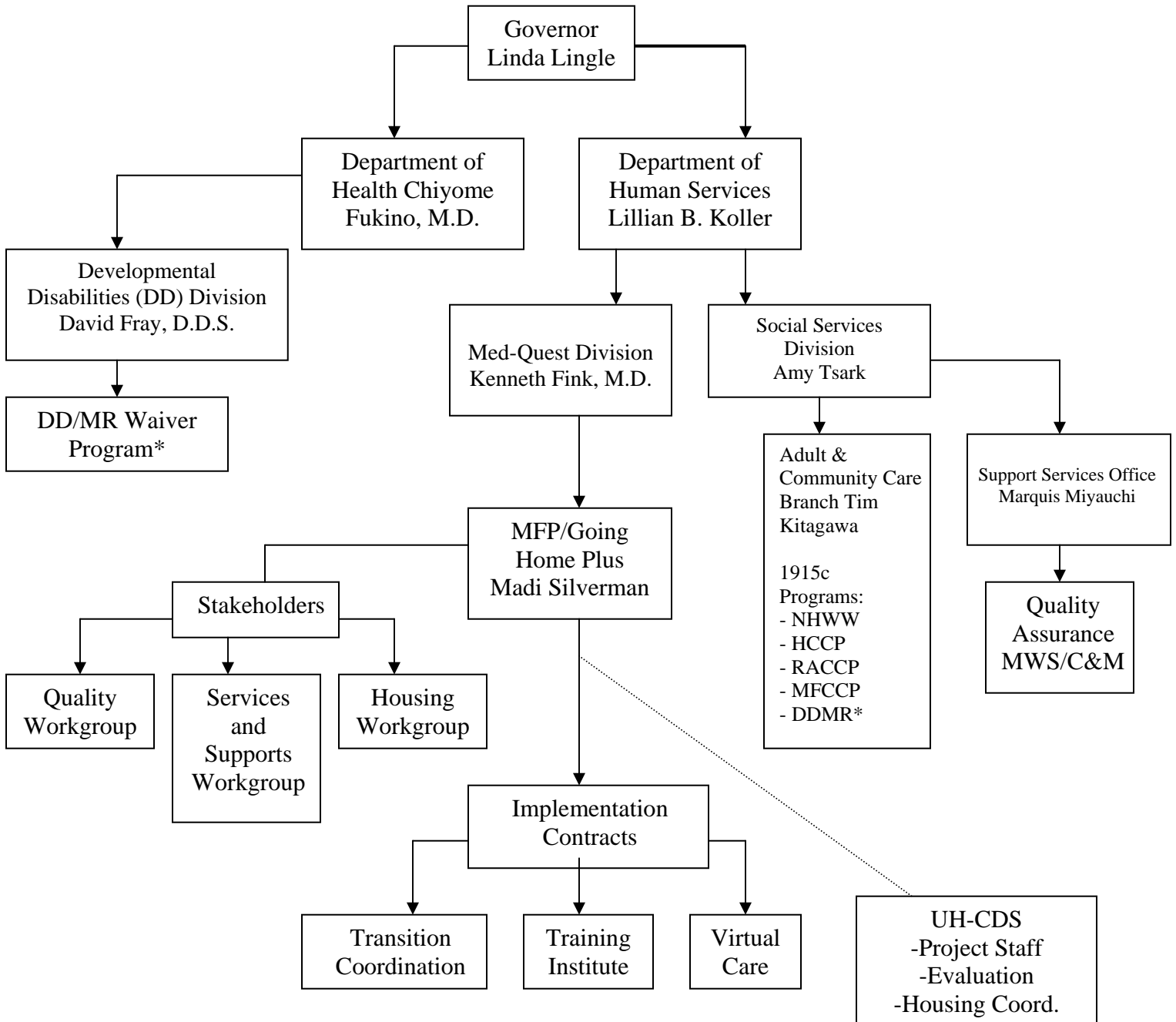
C.1. Organizational Structure.

As the single state Medicaid agency with responsibility for the state plan and Medicaid waiver services, the Department of Human Services (DHS) will be responsible for executing the MFP grant. The Med-QUEST Division (MQD), the organizational unit within DHS that is responsible for the operation and administration of the medical assistance programs, will be the responsible organizational unit within DHS to manage the *Going Home Plus* project.

SSD is the organizational unit within DHS that is responsible for all Medicaid home and community based waiver programs. The Department of Health Developmental Disabilities Division is responsible for the implementation of the DD/MR HCBS waiver program, administered by the Department of Health. As noted in the introduction, the Medicaid state plan and Medicaid waiver home and community based services budgets were combined into one Medicaid budget under MQD in July 2007. A reorganization plan to align organizational responsibility with the consolidated budget is under development to formally transfer the Medicaid waiver programs from SSD to the MQD. This Medicaid reorganization will be effective before the 1115a Quest Expanded Access (QExA) Managed Care Demonstration starts in early 2009. Two MFP organizational charts are attached to illustrate the placement of HCBS services within the department prior to and post implementation of the 1115a demonstration waiver.

Hawai'i Going Home Plus Operational Protocol

C-1.1 Organizational Chart Prior to Quest Expanded Access (QExA) 1115a Demonstration Waiver Implementation



Hawai'i Going Home Plus Operational Protocol

C-1.2 Organizational Chart. After QExA 1115a Demonstration Waiver Implementation

