

Pacific Alliance Newsletter

Spring/Summer 2012

Pacific Alliance

To significantly increase the participation of Individuals with Disabilities in Science, Technology, Engineering, and Mathematics (STEM) in postsecondary education programs and the STEM workforce in Hawai'i.

Center on Disability Studies
University of Hawai'i Mānoa
1410 Lower Campus Road
Hawaii, HI 96822
P: 808-956-4457 F: 808-956-7878
<http://www.cds.hawaii.edu/pacificalliance>



Pacific Alliance
Science, Technology, Engineering, & Mathematics
Postsecondary Education for People with Disabilities

Center on Disability Studies
University of Hawai'i Mānoa
1776 University Ave, UA 4-6
Honolulu, Hawai'i 96822

Robert Stodden
stodden@hawaii.edu

Kelly Roberts
robertsk@hawaii.edu

Kiriko Takahashi
kiriko@hawaii.edu

Steven Brown
sebrown@hawaii.edu

Hye Jin Park
parkhye@hawaii.edu

Lisa Uyehara
uyeharal@hawaii.edu

Jenna Komatsu
komatsuj@hawaii.edu

Emily Calimpong
emilyc@hawaii.edu

Genesis Leong
genesis@hawaii.edu

Pacific Alliance
Science, Technology, Engineering, & Mathematics
Postsecondary Education for People with Disabilities

Pacific Alliance High School Summer Institute/Academic Camp 2012

University of Hawai'i at Mānoa

July 10–13, 2012,
9:00am–12:30pm

July 17–20, 2012,
9:00am–12:30pm

Pacific Alliance STEM Exploration/Career Building Workshops Spring 2012

Dates, times, location to be determined.

For more information contact
Jenna Komatsu
komatsuj@hawaii.edu
808-779-3535



This material is based upon work supported by the National Science Foundation under Grant No. HRD #09-29079.

Any opinions, findings, and conclusions or recommendations expressed in this material are those of the author(s) and do not necessarily reflect the views of the National Science Foundation



The *Pacific Alliance for Supporting Individuals with Disabilities in STEM Fields Partnership* (Pacific Alliance) began in October 2009 with funding from the National Science Foundation to work with the University of Hawai'i at Mānoa (UHM), Honolulu Community College (HCC), Windward Community College (WCC) and O'ahu high schools. The project has recently expanded to include students at Kapi'olani Community College (KCC) and Leeward Community College (LCC). Pacific Alliance is dedicated to providing opportunities that will improve students' grades, college experiences, and progression toward the completion of STEM degree programs and employment.

As of March 2012, an increase to 102 high school students from 15 high schools (Aiea, Campbell, Kapolei, Farrington, Pearl City, Kahuku, Kailua, I don't think we have anyone from Kailua now Kalaheo, Kaimuki, Kaiser, Leilehua, Moanalua, McKinley, Mililani & Roosevelt) and 40 post-secondary students from 5 higher education institutions (HCC, KCC, WCC, LCC & UH at Mānoa) are participating in Pacific Alliance <http://www.cds.hawaii.edu/pacificalliance>

Pacific Alliance also received supplemental funding for a STEM Think Tank for Wounded Warriors. It has positively affected this project by recognizing the existence of veterans in partnering institutions and making an effort to recruit veterans to this project. We look forward to working with more students and partners in the coming year.

The key to our success is Pacific Alliance's four Communities of Practice (COP), which consist of members (faculty, staff, administrators and students) from UH at Mānoa/KCC, HCC, WCC and LCC. We are also grateful for the contributions of the Pacific Alliance Advisory Board and other partners who support this project.

Mahalo nui loa!

STEM Think Tank for Wounded Warriors

“Navigating the transition from military to civilian life; challenges and opportunities for pursuing Science, Technology, Engineering, and Math (STEM) education and careers.”

- Returning combat veterans with disabilities, including those of minority cultural status, are significantly underrepresented in STEM fields, both in postsecondary education and in employment.
- Wounded Warriors might be suffering from traumatic brain injury, while Post-Traumatic Stress (PTS) is another invisible injury that could affect up to 30% of service members and veterans.
- The Hawaiʻi Wounded Warrior STEM Think Tank event took place on March 23-24, 2012.

Outcomes of the Think Tank included:

- Identification of a minimum of 20 Wounded Warriors in Hawaiʻi and the Pacific Region who are possible recruits under the Pacific Alliance objectives and activities.
- Development of a set of recommendations to guide the Think Tank participants in supporting returning combat veterans who wish to enter and succeed in STEM degree programs and employment.
- Development of a Plan to Action for Pacific Alliance personnel which identifies agencies and persons responsible for accomplishing the “next steps” towards working with participants to increase the access, retention, and completion of postsecondary education training and employment in STEM fields by our combat veterans.

Pacific Rim Alliance at the Pacific Rim International Conference on Disability & Diversity

On March 27, 2012, a panel of experts throughout our community came together to focus on transition issues that many students with disabilities in Hawaiʻi face as they progress from high school to college and college to the workforce. During the panel, issues, possible ways of support, and resources were discussed, and 51 individuals throughout the community attended.

The panel and Pacific Alliance staff led a discussion based on three questions:

1. What are the top challenges/barriers students with disabilities face during their transition from high school to college or college to the workforce?
2. What are at least three resources available throughout the community for students in transition?
3. What would you like to know about the transition process?

Mahalo nui loa to the following presenters:



Maxine Nagamine Ph.D., Hawaiʻi DOE, Special Education Branch, Secondary Transition program specialist. Formerly a school administrator & high school science teacher..



Jan Nakamoto, Research Statistician & member of “Hawaiʻi Young Adult in Transition”. She is a parent of a 24-year old who has Asperger’s Syndrome.



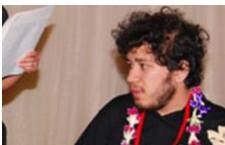
Sandra Tanji, Supervisor for Case Management Unit 1 with the Hawaiʻi DOH, Developmental Disability Division.



Pina Lemusu, Supervisor for the Transition Section of O’ahu Branch at Vocational Rehabilitation and Services for the Blind Division (VRSBD).



Ann Lemke Ph.D., Counselor at WCC, and licensed professional counselor, counseling psychologist, & specialist in school psychology.



Christian Souza, student at Windward Community College studying to become a Civil or Mechanical Engineer.

...more photos on the Pacific Rim International Conference on Disability & Diversity, High School Special Session....



Pacific Alliance Winter Institute 2012

The Pacific Alliance High School Winter Institute, held on January 14, 2012 at the University of Hawaiʻi at Mānoa, was attended by 31 high school juniors and seniors. Participants had the opportunity to share what they learned; meet other high school students with disabilities interested in STEM; and receive a \$100 stipend upon completion of the internship to be applied towards achieving STEM goals. The purpose of the Institute was to provide Pacific Alliance participants with the opportunity to explore STEM fields and careers.

Institute Sessions and Student Evaluation Comments



Second Life – An On-line, Virtual World

Participants interacted with Virtual Worlds for modeling 3-D, science-focused projects and explored other ways to use Second Life.

“I like the fact that there are more ways to teach subjects that involve virtual reality.”

The Wonderful World of Mathematics

UH Mathematics graduate students gave personal experiences of their journeys and particular interest through the wonderful world of mathematics. Presenters also taught students a magic card trick, which can be derived through basic algebra.

“What I like about this session is that they showed us different types of techniques and problem solving in math.”

“I like all the careers that mathematics can get you into. Mathematics has a lot of options.”

Exploring Science Careers

This session covered the study of ecology, evolution, conservation biology, jobs available and personal, professional experiences in these fields.

“What I like about this session is that it tells me the great facts and how it’s interesting learning about exploring science.”



Your Style Preference - Myers-Briggs Type Indicator (MBTI) Assessment & How to Use this Knowledge

The Myers-Briggs Type Indicator® (MBTI) is a personality inventory instrument that allows you to explore your strengths and interests. This session, discussed the results of students’ MBTI inventory and how to use this knowledge to their advantage.

“I like how they tell you what are good jobs you can get with your personality.”

“What I liked about this session is that it made me know and learn about myself.”

Mahalo to the following presenters:

Justin Toyofuku, Michael Andonian, Justin Kong, and Robert Young Graduate Students Dept. of Mathematics University of Hawaiʻi, Mānoa; Mr. Jeffrey Scales Ph.D. Candidate University of Hawaiʻi, Mānoa; Somphone (Sam) Khen, Ph.D. Faculty Counseling and Student Development Center University of Hawaiʻi, Mānoa; Mr. Thomas Conway Project Director and Media Coordinator Center on Disability Studies University of Hawaiʻi, Mānoa