



Promoting Diverse Abilities Across the Lifespan

Director's Corner

Kiriko Takahashi, Ph.D.
Center on Disability Studies Director



Photo of Kiriko

Welcome to March's Spring 2022 issue of the CDS eNewsletter.

We were pleased to offer a successful 37th Annual Pacific Rim International Conference on Disability and Diversity. Over 500 participants from around the world were part of this year's virtual event, which spanned two days of conference activities and events and a pre-conference day of Capacity Building Institutes. Mahalo to everyone who participated in helping make this annual tradition happen, whether as presenter, attendee or volunteer!

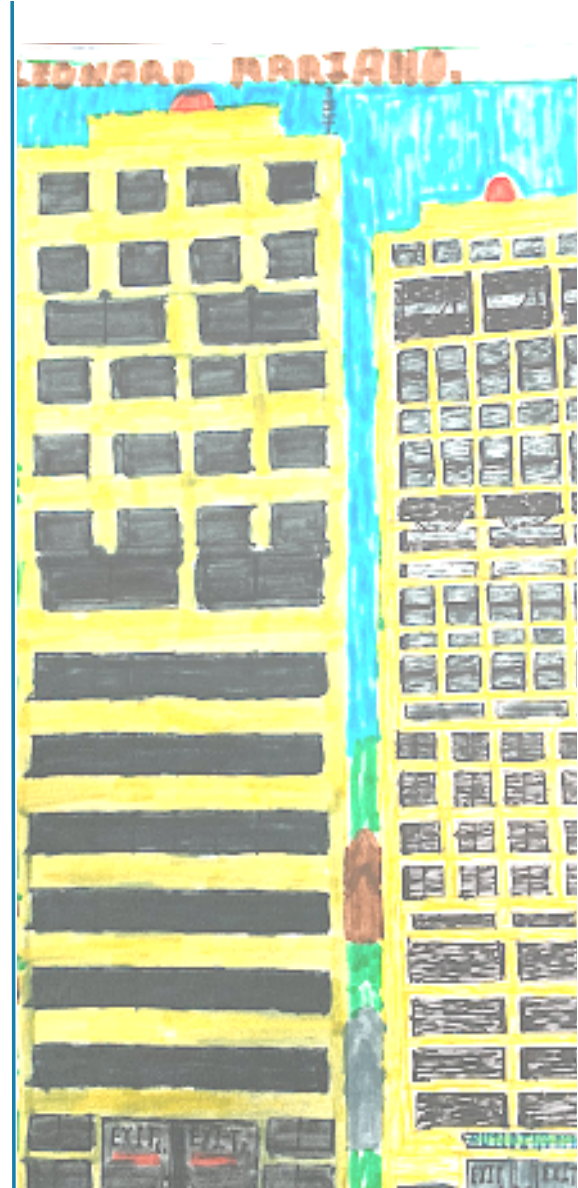
Additionally, this month we join the National Association of Councils on Developmental Disabilities in recognizing Developmental Disabilities Awareness Month www.nacdd.org/ddam1. This campaign highlights opportunities for people with and without disabilities to come together to form strong, diverse communities. The campaign raises awareness about inclusion of people with developmental disabilities in all aspects of community life, as well the barriers many people with disabilities still face in connecting to the communities in which they live.

Special highlights in this issue include:

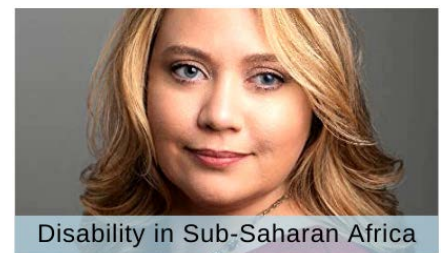
- Artist Leonard Mariano, *Make Art, Change Lives*
- Emerging Leaders introductions, *HI UCEDD*
- COVID-19 vaccine activities, *CDS*
- Featuring CDS projects and partners, *#PacRim2022*
- International Forum highlights, *#PacRim2022*
- Disability in Sub-Saharan Africa Special Issue, *RDS*
- Self-Advocacy trainee update, *PBUCE*
- Growth of Feeling Safe, Being Safe, *DD Council*
- Introduction *NSF Includes*
- Spring 2022 eNewsletter, *Project Hōkūlani*

Interested in being included in the next newsletter? Submit a request by the fourth Friday of each month at <http://go.hawaii.edu/JBJ>.

Artist Leonard Mariano, *Untitled* (2022)



READ MORE



FOLLOW US





Artist Leonard Mariano Make Art, Change Lives!



MACL logo

"I currently attend the day program at Responsive Caregivers of Hawaii at Saratoga Ave. Kapolei, HI. My passion is painting and drawing."

Untitled (2022), Mariano, Kapolei, Hawai'i. Mixed Media Art. Description: Drawing of two yellow sky scrapers with coconut trees and gardens surrounding them.



Photo of Leonard

Follow MACL



DISSEMINATION

Did you know? Triagency Partnership

The Center on Disability Studies serves as one of the Triagency Partners that aim to create a sustainable future for people with developmental disabilities in Hawai'i (DD Act PL 106-402). The two other two essential partners include the Hawai'i State Council on Developmental Disabilities (DD Council) and the Hawai'i Disability Rights Center (HDRC).



CDS logo



DD Council logo



HRRC logo

Education, Training,
& Research

Advocacy & Policy
Development

Protection &
Advocacy

COVID-19 Vaccine Access Project

The COVID-19 Vaccine Access Project (Award: 90DDC50058) is part of a national effort to ensure that everyone is able to make an informed decision about receiving the COVID-19 vaccine. It aims to ensure that information about the vaccine is available in accessible formats, including plain language, ASL, 'Ōlelo Hawai'i, and others that are needed in our community. The project also aims to increase access to the vaccination for people with disabilities and other underserved populations by arranging transportation and community access sites.

As a Triagency partnership, the Center on Disability Studies (CDS), the Hawai'i State Council Developmental Disability Council and the Hawai'i Disability Rights Center has partnered with the Boys and Girls Club of Hawai'i (Nānākuli and Wai'anae Clubhouse) and the Hau'ula Community Center to offer sensory positive vaccine clinics. Individuals with IDD/DD, their families and caregivers are particularly encouraged to attend.

Photo: COVID-19 Vaccine Clinic and Dr. Mathesis



Clinical psychologist Dr. Maya Matheis is on hand to ensure a sensory positive experience!



CLINICS PROVIDE

- HugglePod to escape and feel safe
- Sensory Bags filled with treats and fidget toys
- Free test kits and masks
- Accessible information in: plain language, ASL, 'Ōlelo Hawai'i, and others.



Photo: COVID-19 Vaccine Clinic Entrance Wayfinding Sign

As a sensory positive clinic, CDS has an assortment of toys to help relieve stress and anxiety while children are waiting to receive their vaccine and provides tools to block out sensory stimulation such as noise-canceling headphones and a cloth tent called a HugglePod where children can escape some of the bright lights and feel safe. We offer "sensory bags" filled with treats and fidget toys for when they're feeling anxious or need to release energy. We also provide free test kits and masks! Visit our website at go.hawaii.edu/Zyx and Instagram instagram.com/hawaiiivaccineaccess



Meet our UCEDD Hawai'i Emerging Leaders Trainees!



The inaugural Cohort for the UCEDD HI Trainee program began in January. The goal of the UCEDD Emerging Leaders Trainee program is to build the leadership capacity of diverse individuals to collaborate and positively impact the lives of people with disabilities. Trainees will advance their knowledge of the core functions of University Center for Excellence in Developmental Disabilities (UCEDD) by:

- Developing their leadership and communication skills to support their future careers.
- Strengthening the community of emerging leaders through a range of community based projects.
- Engaging with diverse stakeholders across partnering national networks.



Photo: Kay Gushiken Jernigan

Kay Gushiken Jernigan

Meet Kay Gushiken Jernigan. Kay is currently a Career Counselor at the University of Hawai'i at Mānoa (UHM) Career Center and has been with the Career Center since 2012. Originally from Hilo, she has a passion for working with our diverse student populations within the UHM as well as in her past experiences working at a community college. She is a mother to two young children and likes to spend her free time with her family and friends.

Nalehua o Puna Donlin

Meet Nalehua o Puna Donlin. Nale is currently enrolled in the Kinesiology and Rehabilitation Science (KRS) Rehabilitation Counseling Education Graduate Program at the University of Hawai'i at Mānoa. She is a mother of four boys. She is a passionate family advocate and caregiver which has driven her interest in Disability Studies.

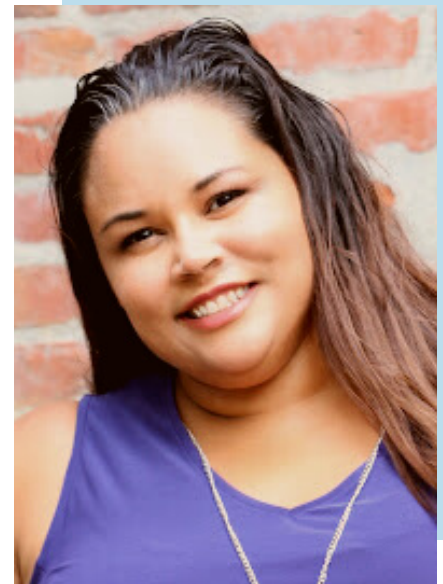


Photo: Nalehua o Puna Donlin

Get the latest updates on the Trainees' journey by following the Center on Disability Studies





Photo: Avree Ito-Fujita

Avree Ito-Fujita

Meet Avree Ito-Fujita. Avree is a 5th-year PhD student in the English department at UH Mānoa and is originally from Kapolei, HI. Avree has experience working with individuals with disabilities through her work as a writing center tutor and administrator for an online tutoring program serving K-12, community college, and university students. She is interested in how disability studies connects to first-year composition and writing center pedagogy. Avree is also a filmmaker and enjoys learning about representations of disability in film.

Saint-Marie Gough

Meet Saint-Marie Gough. Originally from Toronto, Canada, Saint-Marie Gough is pursuing a PhD in Educational Foundations specializing in Educational Policy. Saint-Marie has always had an interest in understanding how organizations are formed, develop, and implement policies that meet their goals and objectives. She was a special education teacher and hopes to focus her research combining education policy with disability studies. In her free time she likes to volunteer, garden, and thrift shop.



Photo: Saint-Marie Gough

Daniel Quinn

Meet Daniel Quinn. Daniel is completing his Master's in Social Work at the University of Hawai'i at Mānoa and the Advanced Certificate in Disability Studies. During his undergraduate studies, he began working with youth and families with a variety of mental health and physical disabilities and has transitioned to working primarily with homeless populations with dual diagnoses. This has led to his career interest within the field of Social Work. In his spare time he likes to work out.



Photo: Daniel Quinn



We will be recruiting cohort 2 emerging leader trainees in the summer. For more information contact: Holly Manaseri, Ph.D., Associate Specialist and Outreach Coordinator, hmanaser@hawaii.edu

CDS Projects Showcased at the 2022 Pacific Rim Conference



PacRim 2022 logo

Interested in learning more about the Center on Disability Studies' research projects, partnerships and impact in the community? Watch the latest #PacRim2022 presentation recordings at <https://cvent.me/ZqawOL>

BE A Mathematician (BEAM)

Moving Back to In-person Math Instruction with COVID Safety Guidelines

Watch Recording: <http://go.hawaii.edu/Vnx>

At the end of this presentation students will learn how to redesign hands-on math activities for middle school students to be fully online as well as in-person instruction that adheres to COVID-19 safety guidelines.



Image: Moving Back to In-person Math Instruction with COVID Safety Presentation

[Watch Video](#)

Center on Disability Studies: Partnership Hawai'i State Dept of Developmental Disabilities' & Feeling Safe, Being Safe Program

Training with Aloha: Emergency Preparedness Training for All

Watch Recording: <http://go.hawaii.edu/Fnx>

At the end of this presentation, participants will learn from a disability- and diversity-lens:

- Common reasons why people with disabilities and community members are not prepared.
- Top tips for advocates and community members can be prepared.
- Ways to participate or host a FSBS training session.





Image: Training with Aloha Presentation

[Watch Video](#)

Follow @PacRimHawaii



Center on Disability Studies: Partnership NSF Includes Alliance (University of Missouri-Kansas City, Northern Arizona University, The Ohio State University, Auburn University, and University of Washington)     

NSF INCLUDES Alliance: The Alliance of Students with Disabilities for Inclusion, Networking, and Transition Opportunities in STEM (TAPDINTO-STEM)

Watch Recording: <http://go.hawaii.edu/xnx>
View Poster: <http://go.hawaii.edu/knx>

Participants will learn about the NSF INCLUDES TAPDINTO-STEM Alliance and its work to enable students with disabilities to succeed and graduate in STEM degree programs. Attendees will learn about our best practices, research findings, and opportunities to become involved in alliance activities.

Hawai'i & Pacific Deaf-Blind Project Consortium, Mellanie Lee: Partnership: College of the Marshall Islands NSSP Project, UHM MCH LEND, Center on Disability Studies, San Francisco State University, Nika Project and the FSM Special Education Division.

Collaboration Across the Pacific (CAP) Academy: Sharing Technology and Skills for Serving Children with Disabilities and their Families

Watch Recording: <http://go.hawaii.edu/xyT>
View Poster: <http://go.hawaii.edu/xnj>

At the end of this presentation, participants will:

- *Define two principles of Design Thinking;*
- *Identify three outcomes for interprofessional learning across health, education, and social services disciplines; and Identify three types of technology for effective collaboration across cultures in an online environment.*



Image: NSF INCLUDES Alliance Presentation

[Watch Video](#)



Image: Collaboration Across the Pacific Academy Presentation

[Watch Video](#)

Hawai'i Statewide Family Engagement Center (HSFEC)



Why Family Engagement is Important

Watch Recording: <http://go.hawaii.edu/xna>

At the end of this presentation, participants will: understand the roles families play in their children's education; learn about high impact engagement strategies; and know where to find resources for strengthening home-school partnerships.

Ka Pilina No'eau and BE A Mathematician



Empower the Parents: Promoting to Create a Community of Learning at Home

Watch Recording: <http://go.hawaii.edu/fnx>

At the end of this session, participants will: Learn about the Ka Pilina No'eau (KPN)/ Be A Mathematician (BEAM) Math and Science Learning (MSL) Model. Hear stories of parents teaching other parents. Learn culturally relevant activities that participants can tailor to their own needs. Learn Hawaiian language and culture.

Ka Pilina No'eau II



Hands-On Learning in a Hands-Off Environment: Cultural and Collaborative STEM Education During the COVID-19 Pandemic

Watch Recording: <http://go.hawaii.edu/xnG>

At the end of this presentation, participants will: Understand how Ka Pilina No'eau II adapted hands-on collaborative lessons to adhere to pandemic guidelines and become aware of how to adopt similar processes when adapting their own lessons; Learn about approaches for virtually training mentors to teach in in-person classrooms; and Observe improvement indicated by results of assessments and surveys.



Image: Why Family Engagement is Important Presentation

[Watch Video](#)



Image: Empower the Parents: Promoting to Create a Community of Learning Presentation

[Watch Video](#)



Image: Hands-On Learning in a Hands-Off Environment Presentation

[Watch Video](#)

Make Art, Change Lives!

Make Art, Change Lives 2021

Watch Recording: <http://go.hawaii.edu/xnP>

At the end of this presentation, participants will see the breadth and diversity of artmaking from artists with disabilities. Art changes lives.

Nā Hokua

Holomua, Moving Forward Together: A Cultural Approach to Supporting Community College Students through Collaborative Partnerships

Watch Recording: <http://go.hawaii.edu/Ynx>

At the end of this presentation, participants will: Learn effective methods of a culturally adapted PSE model of support for Hawaiian students. Understand the importance of building community through partnership and collaboration to support college students. Examine methods of supporting educational communities during the COVID pandemic.

Pacific Basin UCEDD: Commonwealth of the Northern Mariana Islands (CNMI) UCEDD



A Community of Partners Leveraging Resources and Collaboration

Watch Recording: <http://go.hawaii.edu/5yx>

At the end of this presentation participants will: Learn how the CNMI DNP leverages resources. Learn how each agency supports activities to highlight education, transition, and employment. Learn how the CNMI DNP collaborates to provide various activities for our disability community. Leave the presentation knowing how the DNP mobilizes to enhance the lives of individuals with developmental disabilities and individuals with disabilities.



Image: Make Art, Change Lives 2021 Presentation

[Watch Video](#)



Image: Holomua, Moving Forward Together Presentation

[Watch Video](#)



Image: A Community of Partners Leveraging Resources and Collaboration Presentation

[Watch Video](#)

Pacific Basin UCEDD (PBUCE): American Samoa UCEDD and Commonwealth of the Northern Mariana Islands (CNMI) UCEDD



How UCEDD's Can Build the Capacity of Disability Integration Advisors or Access Functional Needs

Watch Recording: <http://go.hawaii.edu/xn3>

At the end of this presentation participants will understand how UCEDD's vast expertise of existing resources and depth of knowledge from Housing to Education and Employment would contribute a holistic perspective to response and recovery. As UCEDD's train professionals the response to our disability and older adults creates a resilient community.

Project Hōkūlani

Supporting Native Hawaiian Students' Transition into Postsecondary STEM Fields

Watch Recording: <http://go.hawaii.edu/ynx>

At the end of this presentation, participants will learn: an intervention model and its five components; effective approaches to promote Native Hawaiian students' transition into postsecondary STEM fields; and sample lessons.

Project Ho'oku'i III: Na Kumu Alaka'i

Don't Forget About the Well-being of Teachers! - Project Ho'oku'i III: Na Kumu Alaka'i Supporting Teachers through the COVID-19 Pandemic

Watch Recording: <http://go.hawaii.edu/onx>

At the end of this presentation, participants will appreciate the demands educators are experiencing during the pandemic, and learn new methods of self-care, strength-based learning.



Image: How UCEDD's Can Build the Capacity of Disability Integration Advisors Presentation

[Watch Video](#)

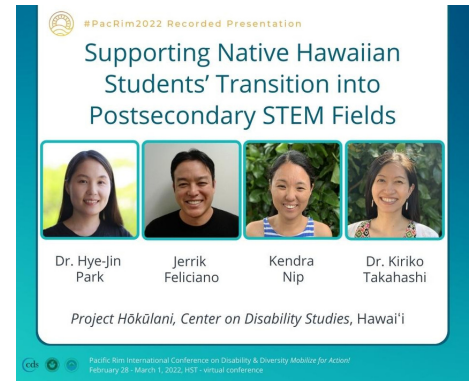


Image: Supporting Native Hawaiian Students' Transition into Postsecondary STEM Presentation

[Watch Video](#)



Image: Don't Forget About the Well-being of Teachers! - Project Ho'oku'i III Presentation

[Watch Video](#)

Project Ho'oku'i IV: 'Ohana Lōkahi



Holistic Learning for the Entire 'Ohana! - Project Ho'oku'i IV: 'Ohana Lōkahi

Watch Recording: <http://go.hawaii.edu/Anx>

At the end of this presentation, participants will learn the importance of working collectively as a student, family, school, and larger community.



Image: Holistic Learning for the Entire 'Ohana! Presentation

[Watch Video](#)

International Forum: Mobilizing Around Inclusion and Disability and Diversity



PacRim 2022 logo

Historically, the Pacific Rim International Conference on Disability and Diversity has served as a gathering place for professionals and stakeholders concerned with disability and diversity issues in the greater Asian Pacific Region. As per tradition, this year CDS offered a special day prior to the main conference to focus upon regional and international issues as a way of welcoming international guests, as well as providing a space for them to meet other international attendees of Pac Rim 2022 to discuss common international issues and concerns to persons with disability and other diverse needs. This year's International Forum was held virtually, with worldwide access to the discussion which featured perspectives from nine speakers from countries including Singapore, China, Japan, India, Thailand, Afghanistan, and Kazakhstan.



Photo: Dr. Jenifer Barclay

Disability in Sub-Saharan Africa Special Issue

April 2022 Release

The Editorial Team of *Review of Disability Studies* is pleased to announce the following upcoming issues:

Following up on the journal's recent publication of its themed issue on Disability and Film and Media (bit.ly/RDSv17i4), an upcoming special issue focussing on Disability in Sub-Saharan Africa (bit.ly/AfricaCFP) is being overseen by Editorial Board member Jenifer Barclay, author of *The Mark of Slavery: Disability, Race, and Gender in Antebellum America* (2021), and will feature guest editors Elvis Imafidon and Charlotte Baker.

Live paper presenters in the 37th Annual Pacific Rim International Conference on Disability are also currently submitting their work for consideration for this year's Pacific Rim Conference Proceedings Issue. Information regarding submission guidelines may be found at <http://go.hawaii.edu/tnx>

Follow @RDSJournal



Self-Advocacy Training at Pacific Basin UCEDD



AMERICAN SAMOA UCEDD (AS UCEDD)



Pacific Basin UCEDD (PBUCE) is the technical assistance center for the American Samoa (AS) UCEDD and the Commonwealth of the Northern Mariana Islands (CNMI) UCEDD to support and enhance the quality of life of persons with developmental disabilities.



COMMONWEALTH OF THE NORTHERN MARIANA ISLANDS UCEDD (CNMI UCEDD)



The goal of the PBUCE is to strengthen governance within and across sites (Northern Marianas College and American Samoa Community College) through regional and national partnerships, while building local capacity for interdisciplinary preservice and community outreach training to include consumers and family members.

One of our programs promotes the "PBUCE Ambassador and Trainee," a 10-month interdisciplinary program designed to develop professionals and students with the skills and knowledge necessary to work with people with disabilities and become leaders in various fields. As part of the program, they received a scholarship to take an undergraduate course from the University of Hawai'i at Mānoa.



PACIFIC BASIN CENTERS FOR EXCELLENCE IN DEVELOPMENTAL DISABILITIES (PBUCE)



The course has given them a foundational knowledge on disability studies (e.g., models of disability, people first language, etc.), policies and laws such as Americans with Disability Act and Conventions on the Rights of People with Disabilities, issues and challenges often faced by people with disabilities, and some solutions towards inclusion. The ambassadors and trainees will then use what they have learned to explore issues in their own communities and engage in seminars, research, and service activities.



FSBS Cover Image

Feeling Safe, Being Safe Continues to Thrive in Hawai'i

The #PacRim2022 Feeling Safe, Being Safe (FSBS) presentation reflected the growth and impact the program has had among Hawai'i's self-advocates and community as a whole.

The presentation **Training with Aloha: Emergency Preparedness Training for All** presented by certified trainers Timothy Renken, Bathey Fong, Ho'opio Balaz, Audrey Ayer & Zosimo A. Arista Jr (program facilitator).

FSBS impacts include:



FSBS preparedness helped with the sudden impact of COVID-19.



Expanded from SPED high schools to agencies, organizations, and Hawai'i's community.



Developed employment and entrepreneurship opportunities.



Built relationships with neighbors, first responders, and people with and without a disability.



Video: One Community, by Bathey Fong, Feeling Safe, Being Safe (<https://youtu.be/cdrsLeL7RRs>)



What does it mean to you to help advocates take charge of their own preparedness?



Timothy Renken
FSBS Trainer

"I love to help self-advocates to teach them how to prepare in an emergency. I feel very proud of myself that I'm doing something for someone and how to help their family and friends."



Audrey Ayer
FSBS Trainer

"By being a leader in your community by letting other people know to take charge of their own independence."



Ho'opio Balaz
FSBS Trainer

"To have the ability to take charge and advocate for others."



Bathey Fong
FSBS Trainer

"I feel proud of myself when I go out to the fairs - they include us to be part of the emergency preparedness community with the Red Cross and other groups."

NSF INCLUDES Alliance, The Alliance of Students with Disabilities for Inclusion, Networking, and Transition Opportunities in STEM (TAPDINTO-STEM)



TAPDINTO-STEM logo

One of National Science Foundation (NSF)'s main goals is

broadening participation and expanding opportunities for underrepresented groups, including students with disabilities.

NSF INCLUDES's unique character is their focus on collaborative infrastructure when working in research hubs.

The Five Elements of Collaborative Infrastructure



Their five elements of collaborative infrastructure include 1) Engage the Community in a shared vision 2) Partnerships provide a platform for collaborative action 3) Goals and Metrics allow for evidence-based decision making 4) Leadership and Communications increase communication and visibility and 5) Establish the capacity for Expansion, Sustainability, and Scale. These elements are expected to be considered at every point of the research discussion and decision making.

NSF INCLUDES Alliance, The Alliance of Students with Disabilities for Inclusion, Networking, and Transition Opportunities in STEM (TAPDINTO-STEM), employed a collective impact approach, with dozens of partnering organizations to increase the number of students with disabilities who complete associate baccalaureate undergraduate STEM degree and enter the STEM workforce. So far, the network comprises two colleges and universities focused on students with disabilities, three community colleges, a minority-serving institution and three major national organizations. Islands Hub is one of several hubs. Each of the universities as lead have other institutions that they are going to work with in the next five years. The network aims to continuously increase the number of partners and institutions that it will be working with.

The Islands Hub hosted a hub-wide meeting on December 8, 2022 from 2-4 pm, HST with representatives from the University of Hawai'i at Mānoa, (UHM), Kapi'olani Community College (KCC), and Northern Marianas College (NMC). The discussion included information about the NSF INCLUDES collective impact, TAPDINTO-STEM overall goals and the process, about students with disabilities in higher education to provide background, about Islands Hub research study, and next steps. Similar to other Hub leaders, the Islands Hub Leader participated in all TAPDINTO-STEM Leadership meetings to learn about each other, discuss various documents, progress, and move forward as a collective.



Project Hōkūlani Spring 2022 eNewsletter

Summer Internships, 2022-23 Recruitment, and much more



Project logo

▶▶▶ E KOMO MAI! *Principal Investigator Dr. Hye-Jin Park Welcome Message*



Dr. Hye-Jin Park

We are excited to welcome you to the Spring 2022 quarterly e-newsletter and to share the growth Project Hōkūlani's five component program.

Check out the full issue at <https://cds.coe.hawaii.edu/hokulani/news>
Sign-up for our quarterly eNewsletter at <http://eepurl.com/hDT2Pj>

▶▶▶ IN THE ISSUE



'Ohana Gatherings

Winter Sessions & Upcoming Sessions



Academic Enrichment in Science

Upcoming Sessions
2022-2023 Student Recruitment



Mentoring

Expanding mentorships across the State of
Hawai'i (Lāna'i & Kaua'i)



Internships

Summer 2022 Recruitment
Introducing STEM Internship Sites



College Transition Support

Helpful College Resources & Tips

Follow Project Hōkūlani

